

F21-2S/2D TRANSMITTER

Small, economical, convenient



MODEL: F21-2S-TX
ITEM CODE: 921-002-001
Dimension: 132 x 45 x 28mm
Weight: 98g(without batteries)

MODEL: F21-2D-TX
ITEM CODE: 921-002-002
Dimension: 132 x 45 x 28mm
Weight: 98g(without batteries)



F21-2S

F21-2D

Product Features

- Two single/double speed buttons, one "STOP"
- 6 control contactors
- With battery voltage warning device, the power supply is cut off during low power
- Safety key switch is to prevent from unauthorized user
- Program the button function by computer interface
- Up/down can be programmed to interlock or non-interlock
- The spare button can be programmed to start, toggle or normal, etc

Transmitter Parameters: F21-TX

Material	Glass-Fiber PA
Enclosure protection class	IP65
Frequency range	VHF: 310~331MHz; UHF: 425~446MHz
Transmitter power	≤10dBm
Transmitter power supply	2 AA batteries
Safety code	32 bits (4.3 billion)
Temperature range	-40°C~+85°C
Control distance	Approx 60m(100 meters is customized)

Standard Configuration

- One transmitter (with hanging belt)
- One dust bag
- One receiver
- Receiver is with 1.6 meter cable
- Battery: one pair
- One receive antenna
- Operation and maintenance manual

Safety features

Each radio remote control system functions in all manner of operational conditions equipped with their own unique identity code (ID-code). This means that only the correct control unit can activate and control its matching receiver (crane/machine) for maximum safety. The system is with FCC and CE certificates.



F21-2S/2D RECEIVER



F21-2S

F21-2D

MODEL: F21-2S RXC
ITEM CODE: 921-102-011
Dimension: 88x92x62mm
Weight: 290g

MODEL: F21-2DRXC
ITEM CODE: 921-103-011
Dimension: 88x92x62mm
Weight: 320g

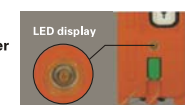


Receiver Parameters: F21-RXC

Material	Glass-Fiber PA
Enclosure protection class	IP65
Frequency range	VHF: 310~331MHz; UHF: 425~446MHz
Receiver sensitivity	-110dBm
Receiver power supply	18~65V AC/DC, 65~440V AC/DC (optional)
Output contactor capacity	8A sealed relay output (with AC 250V/10A relays, 10A fuse)
Control distance	Approx 60m (100 meters is customized)
Safety code	32 bits (4.3 billion)
Temperature range	-40°C~+85°C



The series NO. and production date are laser markings of anti-counterfeit.



The transmitter is with LED display. When power is low, it provides optical signal to warn the user to replace batteries.

Application:

Single-hook, single-speed electric hoist or hoist-type traffic and industrial remote control with 6 contacts or less.

➤ F21-4S/4D TRANSMITTER

Economical, safe, convenient



MODEL: F21-4S-TX
ITEM CODE: 921-004-001
Dimension: 156 x 61 x 51 mm
Weight: 255g (without batteries)

MODEL: F21-4D-TX
ITEM CODE: 921-004-002
Dimension: 156 x 61 x 51 mm
Weight: 255g (without batteries)



F21-4S

F21-4D

Product features

- 4 buttons (D means double steps), spare button
- 8 control contactors
- With battery voltage warning device, the power supply is cut off during low power
- Program the button function by computer interface
- Up/down, east/west can be programmed to interlock or non-interlock
- The spare button can be programmed to start, toggle or normal, etc

Transmitter Parameters: F21-TX

Material	Glass-Fiber PA
Enclosure protection class	IP65
Frequency range	VHF: 310-331MHz; UHF: 425-446MHz
Transmitter power	≤10dBm
Transmitter power supply	2 AA batteries
Safety code	32 bits (4.3 billion)
Temperature range	-40°C~+85°C
Control distance	Approx 100m (200 meters is customized)

Standard Configuration

- One transmitter (with hanging belt)
- One dust bag
- One receiver
- Receiver is with 1.6 meter cable
- Battery: one pair
- One receive antenna
- Operation and maintenance manual

Safety features

Mechanical equipment safety 2006/42: Priority Emergency Stop "Stop"
According to EN61508 to SIL3 level On the basis of EN13849-1 and 2, PLe performance level Electromagnetic compatibility EMC protection. The system is with FCC and CE certificates.



➤ F21-4S/4D RECEIVER



MODEL: F21-RXC
ITEM CODE: 921-100-112
Dimension: 205x86x80mm
Weight: 620g



Receiver Parameters: F21-RXC

Material	Glass-Fiber PA
Enclosure protection class	IP65
Frequency range	VHF: 310-331MHz; UHF: 425-446MHz
Receiver sensitivity	-110dBm
Receiver power supply	18-65V AC/DC, 65-440V AC/DC (optional)
Output contactor capacity	8A sealed relay output (with AC 250V/10A relays, 10A fuse)
Control distance	Approx 100m (200 meters is customized)
Safety code	32 bits (4.3 billion)
Temperature range	-40°C~+85°C



The green technology innovation
The green design of power supply is to enhance not only the products adaptability on the environment, but also the concern on the social green idea. We will certainly progress with the times.



Application:

Single-hook, single-speed electric hoist or hoist-type traffic and industrial remote control with 8 contacts or less

F21-E1/E2/E1B TRANSMITTER

Economical, safe, convenient



MODEL: F21-E1-TX
ITEM CODE: 921-006-001
Dimension: 156 x 61 x 51 mm
Weight: 255g (without batteries)

MODEL: F21-E2-TX
ITEM CODE: 921-006-002
Dimension: 156 x 61 x 51 mm
Weight: 255g (without batteries)

MODEL: F21-E1B-TX
ITEM CODE: 921-006-101
Dimension: 164 x 75 x 46 mm
Weight: 315g (without batteries)



F21-E1

F21-E2

F21-E1B

Product features

- 8 operation buttons, 6 single-speed buttons and "STOP"
- 8 control contactors
- With battery voltage warning device, the power supply is cut off during low power
- Program the button function by computer interface
- Up/down, east/west, north/south can be programmed to interlock or non-interlock.
- The spare button can be programmed to start, toggle or normal, etc

Transmitter Parameters: F21-TX

Material	Glass-Fiber PA
Enclosure protection class	IP65
Frequency range	VHF: 310-331MHz; UHF: 425-446MHz
Transmitter power	≤10dBm
Transmitter power supply	2 AA batteries
Safety code	32 bits (4.3 billion)
Temperature range	-40°C~+85°C
Control distance	Approx 100m (200 meters is customized)

Standard Configuration

- One transmitter (with hanging belt)
- One dust bag
- One receiver
- Receiver is with 1.6 meter cable
- Battery: one pair
- Operation and maintenance manual

Safety features

- Unique 4.3 billion ID code
- Hamming code
- Enhanced watch-dog circuit
- With FCC and CE certificate



F21-RXC RECEIVER

Start protection circuit

Each system has a dedicated testing circuit. Before the system start, the transmitting system test all switch contacts and receiving system test relays. Only both procedures are passed, then whole system start working.

MODEL: F21-RXC
ITEM CODE: 921-100-112
Dimension: 205x86x80mm
Weight: 620g



Receiver Parameters: F21-RXC

Material	Glass-Fiber PA
Enclosure protection class	IP65
Frequency range	VHF: 310-331MHz; UHF: 425-446MHz
Receiver sensitivity	-110dBm
Receiver power supply	18-65V AC/DC, 65-440V AC/DC (optional)
Output contactor capacity	8A sealed relay output (with AC 250V/10A relays, 10A fuse)
Control distance	Approx 100m (200 meters is customized)
Safety code	32 bits (4.3 billion)
Temperature range	-40°C~+85°C



Connect buckle



Damping rubber



Safety code

Application:

Single-hook, single-speed electric hoist or hoist-type traffic and industrial remote control with 8 contacts or less.

➤ F23-A++/BB TRANSMITTER

Economical, safe, durable



MODEL: F23-A++-TX
ITEM CODE: 923-010-101
Dimension: 164 x 75 x 46 mm
Weight: 328g (without batteries)

MODEL: F23-BB-TX
ITEM CODE: 923-012-101
Dimension: 164 x 75 x 46 mm
Weight: 328g (without batteries)

disabled NO.3
and NO.4 buttons



F23-A++

F23-BB

Product Features

- 12 single speed buttons, one "STOP"
- 12 control contactors
- With battery voltage warning device, the power supply is cut off during low power
- Safety switch key is to prevent from unauthorized user
- Program the button function by computer interface
- Up/down, east/west, south/north can be programmed to interlock or non-interlock
- Start key can be programmed to start, toggle switch, normal or other functions
- The spare buttons can be programmed to normal, interlock, toggle or start, etc

Transmitter Parameters: F23-TX

Material	Glass-Fiber PA
Enclosure protection class	IP65
Frequency range	VHF: 310-331MHz; UHF: 425-446MHz
Transmitter power	≤10dBm
Transmitter power supply	2 AA batteries
Safety code	32 bits (4.3 billion)
Temperature range	-40°C~+85°C
Control distance	Approx 100m (200 meters is customized)

Standard Configuration

- One transmitter (with hanging belt)
- One dust bag
- One receiver
- Receiver is with 1.6 meter cable
- Battery: one pair
- One receive antenna
- Operation and maintain manual

Safety features

Each radio remote control system functions in all manner of operational conditions equipped with their own unique identity code (ID-code). This means that only the correct control unit can activate and control its matching receiver (crane/machine) for maximum safety With FCC and CE Certificates.



➤ F23-A++/BB RECEIVER



MODEL: F23-A++-RXC
ITEM CODE: 923-100-012
Dimension: 168x166x93mm
Weight: 780g

MODEL: F23-BB-RXC
ITEM CODE: 923-610-011
Dimension: 320x253x107mm
Weight: 2020g

F23-A++

F23-BB



Receiver Parameters: F23-RXC

Material	Glass-Fiber PA
Enclosure protection class	IP65
Frequency range	VHF: 310-331MHz; UHF: 425-446MHz
Receiver sensitivity	-110dBm
Receiver power supply	18-65V AC/DC, 65-440V AC/DC (optional)
Output contactor capacity	8A sealed relay output (with AC 250V/10A relays, 10A fuse)
Control distance	Approx 100m (200 meters is customized)
Safety code	32 bits (4.3 billion)
Temperature range	-40°C~+85°C



Button is English or arrow
(optional, customized)



Standard antenna interface
optional enhanced antenna

Application:

MD double-speed electric hoist or double-speed, double-hook/single-speed crane or any industrial remote control with 12 contacts or less.

F24 SERIES TRANSMITTER

Safe, reliable, functional, operational



MODEL: F24-6S/D-TX
ITEM CODE: 924-006-001
Dimension: 156 x 61 x 51 mm
Weight: 255g (without batteries)

MODEL: F24-8S/D-TX
ITEM CODE: 924-008-001
Dimension: 186 x 61 x 51 mm
Weight: 280g (without batteries)

MODEL: F24-10S/D-TX
ITEM CODE: 924-010-001
Dimension: 186 x 61 x 51 mm
Weight: 280g (without batteries)

MODEL: F24-12S/D-TX
ITEM CODE: 924-012-001
Dimension: 186 x 61 x 51 mm
Weight: 280g (without batteries)



Product features

- 7-12 buttons (D means double steps), STOP, START, spare buttons
- Up to 20 control contacts
- With battery voltage warning device, the power supply is cut off during low power
- Safety switch key is to prevent from unauthorized user
- Program the button function by computer interface
- Up/down, east/west, south/north can be programmed to interlock or non-interlock
- Power key can be programmed to start, toggle switch, normal or other functions
- The spare buttons can be programmed to normal, interlock, toggle or start, etc

Transmitter Parameters: F24-TX

Material	Glass-Fiber PA
Enclosure protection class	IP65
Frequency range	VHF: 310-331MHz; UHF: 425-446MHz
Transmitter power	≤10dBm
Transmitter power supply	2 AA batteries
Safety code	32 bits (4.3 billion)
Temperature range	-40°C~+85°C
Control distance	Approx 100m (200 meters is customized)



Standard Configuration

- One transmitter (with hanging belt)
- One dust bag
- One receiver
- Receiver is with 1.6 meter cable
- Battery: one pair
- One receive antenna
- Operation and maintenance manual

Safety features

Each radio remote control system functions in all manner of operational conditions equipped with their own unique identity code (ID-code). This means that only the correct control unit can activate and control its matching receiver (crane/machine) for maximum safety.

F24 SERIES RECEIVER

MODEL: F24-RXC
ITEM CODE: 924-100-102-112
Dimension: 210x162x107mm
Weight: 1220g



F24 series remote control system have 80 channels in its frequency range. Even in situation where many sets of remote control are used in the same time, working channel can be easily chose without interfering with other signals and hundred-percent safe and reliable. With advanced design and high quality components, the system is durable and easy to operate. It can easily adapt to complicated and harsh industrial environments such as extra-high/low temperature, dusty, strong vibration, greasy, heavy humidity, etc.

Transmitter and receiver have many functions used in conjunction. The emergency stop button is located in the upper left of transmitter which meets the safety and ergonomics. When stop button is pressed, the system stop working immediately and unconditionally. Transmitter is equipped with a shell of more consistent with ergonomics. The new shell material is more durable, lighter and thinner.

There are 30 types of different configurations based on customer's requirements. Maximum 20 control contacts are sufficient to meet most of requirements. The technique, function, security and flexibility satisfy all your requirements. It is the most advanced remote control system.

Receiver Parameters: F24-RXC

Material	Glass-Fiber PA
Enclosure protection class	IP65
Frequency range	VHF: 310-331MHz; UHF: 425-446MHz
Receiver sensitivity	-110dBm
Receiver power supply	18-65V AC/DC, 65-440V AC/DC (optional)
Output contactor capacity	8A sealed relay output (with AC 250V/10A relays, 10A fuse)
Control distance	Approx 100m (200 meters is customized)
Safety code	32 bits (4.3 billion)
Temperature range	-40°C~+85°C



Standard antenna interface optional enhanced antenna



The on/off switch on the transmitter is to prevent from being used by the unauthorized persons.



Dual switch power supply

Application:

The heavy industrial machinery, such as lifting machinery, crane, hydraulic crane, concrete pump, roller coaster, mining machinery, hoist, truck crane, dump truck, lifting locomotive, lifting machine etc



F24-D TRANSMITTER

Safe, reliable, functional, operational



MODEL: F24-D-TX
 ITEM CODE: 924-010-101
 Dimension: 186 x 61 x 51 mm
 Weight: 280g (without batteries)

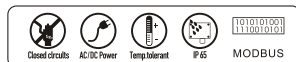
With full sealed and two steps buttons, the products' performance is improved and service life is longer. The "mushroom" emergency stop button is with self-locking function which ensures complete safety. Enhanced transmitter power is to increase the control distance to be 200 meters.

Product features

- 10 double speed buttons, stop, start, spare buttons
- 22 control contactors
- Battery voltage warning device, the power supply is cut off during low power
- Safety key switch is to prevent from unauthorized users
- Program the button function by computer interface
- Up/down, east/west, south/north can be programmed to interlock or non-interlock
- Start key can be programmed to start, toggle switch, normal or other functions
- The spare buttons can be programmed to start, toggle, interlock or normal, etc

Transmitter Parameters: F24-TX

Material	Glass-Fiber PA
Enclosure protection class	IP65
Frequency range	VHF: 310~331MHz; UHF: 425~446MHz
Transmitter power	≤10dBm
Transmitter power supply	2 AA batteries
Safety code	32 bits (4.3 billion)
Temperature range	-40°C~+85°C
Control distance	Approx 100m (200 meters is customized)



F24-D

Standard Configuration

- One transmitter (with hanging belt)
- One dust bag
- One receiver
- Receiver is with 1.6 meter cable
- Battery: one pair
- One receive antenna
- Operation and maintenance manual

Safety features

Each radio remote control system functions in all manner of operational conditions equipped with their own unique identity code (ID-code). This means that only the correct control unit can activate and control its matching receiver (crane/machine) for maximum safety.

F24-D RECEIVER

MODEL: F24-D-RXC
 ITEM CODE: 924-610-012
 Dimension: 320x253x107mm
 Weight: 2020g



Receiver Parameters: F24-RXC

Material	Glass-Fiber PA
Enclosure protection class	IP65
Frequency range	VHF: 310~331MHz; UHF: 425~446MHz
Receiver sensitivity	-110dBm
Receiver power supply	18~65V AC/DC; 65~440V AC/DC (optional)
Output contactor capacity	8A sealed relay output (with AC 250V/10A relays, 10A fuse)
Control distance	Approx 100m (200 meters is customized)
Safety code	32 bits (4.3 billion)
Temperature range	-40°C~+85°C



Connection method is flexible and suitable for special requirements.



The LED of receiving system indicates the working states to see the operation voltage of the receiving system

Application:

It is mainly used in metallurgy, shipbuilding, container terminals, warehousing, machinery manufacturing, chemical industry, paper, construction and engineering machinery and other fields with lifting controlled by remote controls.



➤ F24-60 TRANSMITTER

Intelligent, powerful, safe, reliable, outstanding

Main performance of TELEcontrol remote control system

The emergency stop signal of telecontrol remote control system includes emergency stop signal and power off signal during off work. Emergency stop signal command switches off the receiving system actively (without any effective output). It needs only 20ms from signal sending to receiving. The power off signal during off work is that the receiving system does not receive effective signals from transmitter during certain time (for examples, the battery is low power, the distance is out of control range and no operation for long time etc.), then the receiving system is off automatically. The time can be programmed (10 minutes, 20 minutes, 1 hour, 4 hours etc.)

System address

Each remote control system is programmed with different system address codes. Each code is used only one time and they are not repeated to avoid interference and wrong signal between the systems.

Digital processing system

With CPU microprocessor and transmitting RFID chip, the transmitting system assures the instruction codes be transmitted accurately and fast. With CPU microprocessor and receiving RFID chip, the receiving system assures accurate and reliable decoding. To ensure the perfect safety and reliability, the receiving system is featured with brake monitor circuit which makes correction on the received signals and decoded digital signals. The CPU makes self-testing to ensure the stability of the remote control system.



The display panel

The LED of receiving system indicates the working states to see the operation voltage of the receiving system, signal transmitting, the first and second testing circuit is normal or not. It is used for system adjustment and maintenance.



Start protection circuit

Each system has a dedicated testing circuit. Before the system start, the transmitting system test all switch contacts and receiving system test relays. Only both procedures are passed, then whole system start working.



Transmitter letterings

The letters and graphics are clear. The panel makes the operation to be more intuitive, more convenient

The on/off button on the transmitter prevent from being used by those unauthorized persons.



TELEcontrol miniature joysticks

With twenty years application and improving, TELEcontrol joysticks of special material are proved to be the best products. Ten years guarantee eliminates the customers worries.



The green technology innovation

The green design of power supply is to enhance not only the products adaptability on the environment, but also the concern on social hot green idea. We will certainly progress with the times.



F24-60 TRANSMITTER

Intelligent, powerful, safe, reliable, outstanding



MODEL: F24-60-TX
ITEM CODE: 924-600-001
Dimension: 210 x 152 x 128 mm
Weight: 980g (without batteries)



F24-60

Product features

- 6 buttons, 4 three-position or two-position rotating switch, stop, start, spare button.
- 2 five-step joysticks with 10 million times of mechanical life and pure proportion.
- Up to 40 control contacts
- With battery voltage warning device, the power supply is cut off during low power
- Safety switch key is to prevent from unauthorized user
- Program the button function by computer interface
- Start key can be programmed to start, toggle switch, normal or other functions
- The spare buttons can be programmed to start, toggle, interlock or normal, etc
- Installed with proportional module for analog signal output (optional)

Transmitter Parameters: F24-TX

Material	Glass-Fiber PA
Enclosure protection class	IP65
Frequency range	VHF: 310-331MHz; UHF: 425-446MHz
Transmitter power	≤10dBm
Transmitter power supply	2 AA batteries
Safety code	32 bits (4.3 billion)
Temperature range	-40°C~+85°C
Control distance	Approx 300m

Standard Configuration

- One transmitter (with waist belt)
- One receiver
- Receiver is with 2.5 meter cable
- Battery: two pairs
- One receive antenna
- One battery box
- Operation and maintenance manual

Safety Each radio remote control system functions in all manner of operational conditions equipped with their own unique identity code (ID-code). This means that only the correct control unit can activate and control its matching receiver (crane/machine) for maximum safety.



F24-60 RECEIVER

MODEL: F24-60-RXC
ITEM CODE: 924-610-011
Dimension: 320x253x107mm
Weight: 2020g

As double joystick remote control, F24-60 is one of the most advanced crane controllers on the market and it is developed in ISO9001 certificated factory with more than 21 years history.

F24-60 is designed with strong safety features. It has more than 4.3 billion unique safety code, automatic frequency tracking and locking and failure self-diagnosis, etc. Stop button is automatic. When components such as switches, joysticks, or relays are in fault, The system stops working till it is fixed.

F24-60 has extraordinary communication design—simultaneous encoding and decoding transmission, interference elimination, error detection and correction, and frequency resettable manually.

F24-60 has large amounts of programmable functions and is extensible using Windows compatible software with free update. Functions are all programmable.



Receiver Parameters: F24-RXC

Material	Glass-Fiber PA
Enclosure protection class	IP65
Frequency range	VHF: 310-331MHz; UHF: 425-446MHz
Receiver sensitivity	-110dBm
Receiver power supply	18-65V AC/DC, 65-440V AC/DC (optional)
Output contactor capacity	8A sealed relay output (with AC 250V/10A relays, 10A fuse)
Control distance	Approx 300m
Safety code	32 bits (4.3 billion)
Temperature range	-40°C~+85°C



The green technology innovation
The green design of power supply is to enhance not only the products adaptability on the environment, but also the concern on social hot green idea. We will certainly progress with the times.



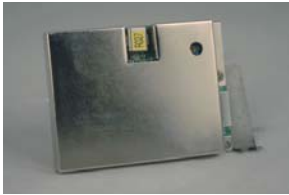
Installation of battery box

Application:
Double joystick wireless remote control, F24-60 is suitable for double hooks and multi-speed, multi-function and proportional crane and industrial remote controls with complicated functions.



F26 SERIES TRANSMITTER

Intelligent, flexible, safe, reliable



MODEL: F26-A-TX
ITEM CODE: 926-010-101
Dimension: 186x 61 x 51 mm
Weight: 255g(without batteries)

MODEL: F26-B-TX
ITEM CODE: 926-012-101
Dimension: 186x 61 x 51 mm
Weight: 255g(without batteries)

MODEL: F26-C-TX
ITEM CODE: 926-006-101
Dimension: 156 x 61 x 51 mm
Weight: 255g(without batteries)



Product features

- 7-11 buttons, stop and spare button
- Up to 18 control contacts
- With battery voltage warning device, the power supply is cut off during low power
- Program the button function by computer interface
- Up/down, east/west, south/north can be programmed to interlock or non-interlock
- Start key can be programmed to start, toggle switch, normal or other functions
- The spare buttons can be programmed to start, toggle, interlock or normal, etc

Transmitter Parameters: F26-TX

Material	Glass-Fiber PA
Enclosure protection class	IP65
Frequency range	VHF: 310-331MHz; UHF: 425-446MHz
Transmitter power	≤10dBm
Transmitter power supply	2 AA batteries
Safety code	32 bits (4.3 billion)
Temperature range	-40°C~+85°C
Control distance	Approx 100m (200 meters is customized)

Standard Configuration

- One transmitter (with hanging belt)
- One dust bag
- One receiver
- Receiver is with 1.6 meter cable
- Battery: one pair
- One receive antenna
- Operation and maintenance manual

Dual power supply:

Focus on power supply module for thirteen years, the power supply is more stable and energy saving. It is with dual power supply, AC/DC 18-65V and 65-440v which can be switched by user.



F26 SERIES RECEIVER

MODEL: F26-RXC
ITEM CODE: 923-100-012
Dimension: 168x166x93mm
Weight: 780g



The frequency range for F26 series remote control system is 315MHz and 433MHz. With narrowband FM method, it has 80 channels. Even in situation where many sets of remote control are used in the same time, working channel can be easily chose without interfering with other signals and hundred-percent safe and reliable. It is the choice for vehicle equipments, winches, cranes, and other remote controls. With advanced design and high quality components, the system is durable and easy to operate.

F26 series remote control system can easily adapt to complicated and harsh industrial environments such as extra-high/low temperature, dusty, strong vibration, greasy, heavy humidity, etc. An emergency stop button is located in the upper left of transmitter which meets the safety and principle of human body engineering. When stop button is pressed, the system stop working immediately and unconditionally. Transmitter is in accordance with EN954-1, 3 safety standard. Transmitter is equipped with a shell of more consistent with human body engineering. The new shell material is more durable, lighter and thinner.

Receiver Parameters: F26-RXC

Material	Glass-Fiber PA
Enclosure protection class	IP65
Frequency range	VHF: 310-331MHz; UHF: 425-446MHz
Receiver sensitivity	-110dBm
Receiver power supply	18-65V AC/DC, 65-440V AC/DC (optional)
Output contactor capacity	8A sealed relay output (with AC 250V/10A relays, 10A fuse)
Control distance	Approx 100m (200 meters is customized)
Safety code	32 bits (4.3 billion)
Temperature range	-40°C~+85°C

Model Name Function Description

F26-A1	Eight single-speed buttons
F26-A2	The first two buttons are double speed and others are single speed.
F26-A3	Eight two-speed buttons
F26-B1	Ten single-speed buttons
F26-B2	The first two buttons are double speed and others are single speed
F26-B3	Ten two-speed buttons
F26-C1	The first two buttons are double speed and others are single speed.
F26-C2	The first four buttons are double speed and others are single speed.
F26-C3	Six two-speed buttons

Application:

MD double-speed electric hoist or double-speed, double-hook/single-speed crane and industrial remote control with 18 contacts or less.

EF-24 TRANSMITTER

Explosion-proof design



MODEL: EF24-TX
ITEM CODE: 924-400-001
Dimension: 186 x 61 x 51 mm
Weight: 280g(without batteries)



EF24-6S/D

EF24-8S/D

EF24-10S/D

EF24-12S/D

Product features

- 10 double steps pushbuttons + EMERGENCY STOP + START KEY + SPARE
- 20 control contactors
- Battery voltage warning device, the power supply is cut off during low power
- Safety key switch is to prevent from unauthorized users
- Program the button function by computer interface
- Up/down, east/west, south/north can be programmed to to interlock or non-interlock
- Start key can be programmed to start, toggle switch, normal or other functions
- The spare buttons can be programmed to start, toggle, interlock or normal, etc

Transmitter Parameters: EF24-TX

Material	Glass-Fiber PA
Enclosure protection class	IP65
Frequency range	VHF: 310-331MHz; UHF: 425-446MHz
Transmitter power	≤10dBm
Transmitter power supply	4 AA batteries
Safety code	32 bits (4.3 billion)
Temperature range	-40°C~+85°C
Control distance	Approx 100m (200 meters is customized)

Standard Configuration

- One transmitter(with hanging belt)
- One dust bag
- One receiver
- Receiver is with 1.6 meter cable
- Battery: one pair
- One receive antenna
- Operation and maintenance manual

Dual power supply:

EF24 is new series explosion-proof radio remote control based on F24 series, strictly complies with explosion-proof criterion GB3638.1 and GB3836.4, and has passed EXIBII BT4 intrinsic safety certification, can operate safely in the chemical and petrochemical industries, mining and other flammable, explosive and hazardous environments,



EF-24 RECEIVER

MODEL: EF24-RXC
ITEM CODE: 924-100-103
Dimension: 210x162x107mm
Weight: 1220g



Safety of Receiver Operation

The system is with explosion-proof casing and inner electronic circuit safe solution and it meets ATEX rules and strictly complies with explosion-proof standard. The emergency stop circuit and control with duplex redundant and safety relay with forcibly guided (mechanically linked) contacts which make it meets the E-stop class Gat.3 in The European mechanical equipment standard.

To ensure safety, continuous wireless communication device make receiver stop passively when the radio signal is disconnected or is interfered.

Buttons can be programmed to interlock to avoid opposite operation.



SPECIAL PRODUCT

Receiver Parameters: EF24-RXC

Material	Glass-Fiber PA
Enclosure protection class	IP65
Frequency range	VHF: 310-331MHz; UHF: 425-446MHz
Receiver sensitivity	-110dBm
Receiver power supply	18-65V AC/DC, 65-440V AC/DC (optional)
Output contactor capacity	8A sealed relay output (with AC 250V/10A relays, 10A fuse)
Control distance	Approx 100m (200 meters is customized)
Safety code	32 bits (4.3 billion)
Temperature range	-40°C~+85°C



Shell is of antistatic material, and adding antistatic agent, the maximum enhancement in the anti-static grade products.

Application:

Typical applications: It can be widely used in offshore oil field, oil tankers, onshore oilfield, chemical industry, oil refinery, coal mines, paint factory and aircraft maintenance factory.

EF24-60 TRANSMITTER

Explosion-proof design



MODEL: EF24-60-TX
ITEM CODE: 924-600-002
Dimension: 210 x 152 x 128 mm
Weight: 980g (without batteries)



EF24-60

Product features

- 6 buttons, 4 three-position or two-position rotating switch, stop, start, spared button.
- 2 five-step joysticks with 10 million times of mechanical life and pure proportion.
- Up to 40 control contacts
- With battery voltage warning device, the power supply is cut off during low power
- Safety switch key is to prevent from unauthorized user
- Program the button function by computer interface
- Start key can be programmed to start, toggle switch, normal or other functions
- The spare buttons can be programmed to start, toggle, interlock or normal, etc
- Installed with proportional module for analog signal output (optional)

Transmitter Parameters: EF24-TX

Material	Glass-Fiber PA
Enclosure protection class	IP65
Frequency range	VHF: 310-331MHz; UHF: 425-446MHz
Transmitter power	≤10dBm
Transmitter power supply	2 AA batteries
Safety code	32 bits (4.3 billion)
Temperature range	-40°C~+85°C
Control distance	Approx 300m

Standard Configuration

- One transmitter (with waist belt)
- One receiver
- Receiver is with 2.5 meter cable
- Battery: two pairs
- One receive antenna
- One battery box
- Operation and maintenance manual

Dual power supply:

EF24 is new series explosion-proof radio remote control based on F24 series, strictly complies with explosion-proof criterion GB3638.1 and GB3836.4, and passed EXIBII BT4 intrinsic safety certification, can operate safely in the chemical and petrochemical industries, mining and other flammable, explosive and hazardous environments.

EF24-60 RECEIVER

MODEL: EF24-60-RXC
ITEM CODE: 924-610-012
Dimension: 320x253x107mm
Weight: 2020g



Safety Features

Wireless Communication Safety between Transmitter and Receiver

Continuous wireless communication connection: Based on omnibearing wireless signal transmitting design and barrier free features, operators can handle with lifting equipment precisely and avoid dangerous areas.

Non-repeated 4.3 billion codes are used for system decoding of transmitter and receiver.

Digital communication Hamming code correcting distance is 4 bits (minimum information difference between two groups digital communication)



SPECIAL PRODUCT

Receiver Parameters: EF24-RXC

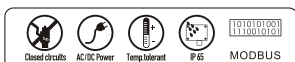
Material	Glass-Fiber PA
Enclosure protection class	IP65
Frequency range	VHF310-331MHz, UHF425-446MHz
Receiver sensitivity	-110dBm
Receiver power supply	18-65V AC/DC, 65-440V AC/DC (optional)
Output contactor capacity	8A sealed relay output (with AC 250V/10A relays, 10A fuse)
Control distance	Approx 300m
Safety code	32 bits (4.3 billion)
Temperature range	-40°C~+85°C



Shell is of antistatic material, and adding antistatic agent, the maximum enhancement in the anti-static grade products.

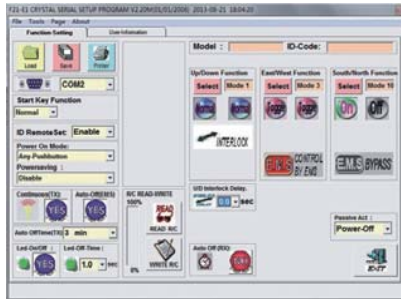
Application:

Typical applications: It can be widely used in offshore oil field, oil tankers, onshore oilfield, chemical industry, oil refinery, coal mines, paint factory and aircraft maintenance factory.

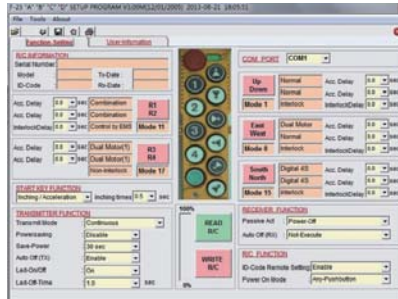


SOLUTIONS

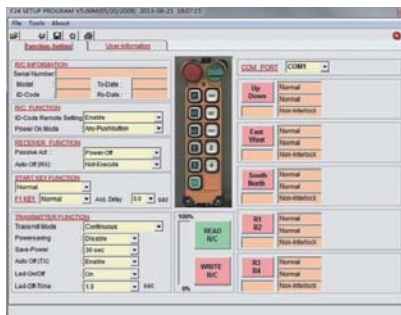
F21 Function of the software



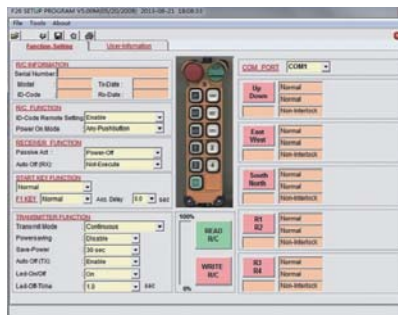
F23 Function of the software



F24 Function of the software



F26 Function of the software



F24-60 Function of the software



ACCESSORIES



Copier
920-101-001



Data line and software
920-101-002



Shockproof base
701-924-001



Waist belt
701-924-002



shoulder strap
701-924-003



Joystick
701-924-004



Battery box
701-924-005



Emergency stop button
701-924-006



Rotary switch
701-924-007



Toggle switch
701-924-008



Frequency decoding board
701-924-009



Tag
701-924-010



Antenna
701-901-001



Antenna
701-901-002



Antenna
701-901-003



Antenna
701-901-101



Start Switch
701-901-004



Rubber button
701-921-001



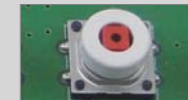
Emergency stop board
701-924-011



Relay
701-901-005



Double speed button
701-901-006



Single speed button
701-921-002



Crystal
701-901-007



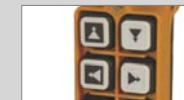
Magnet Key
701-921-003



Dust bag
701-924-012



Dust bag
701-921-004



button label
701-901-008



Battery
701-901-009