

# AT40

## COMPACT LIGHT JOYSTICK



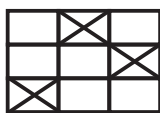
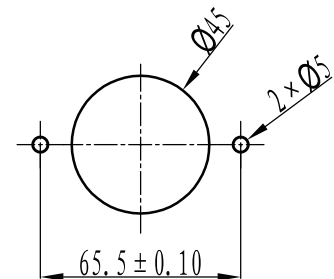
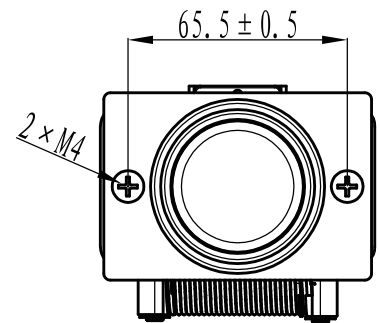
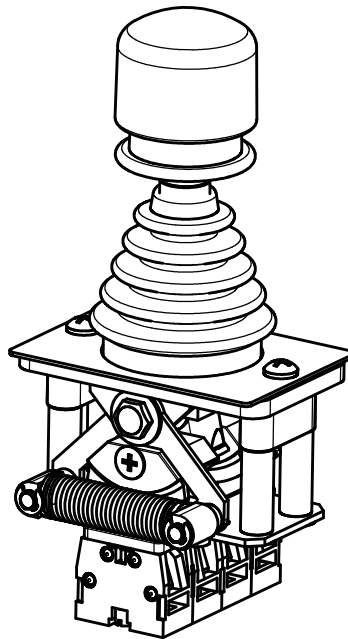
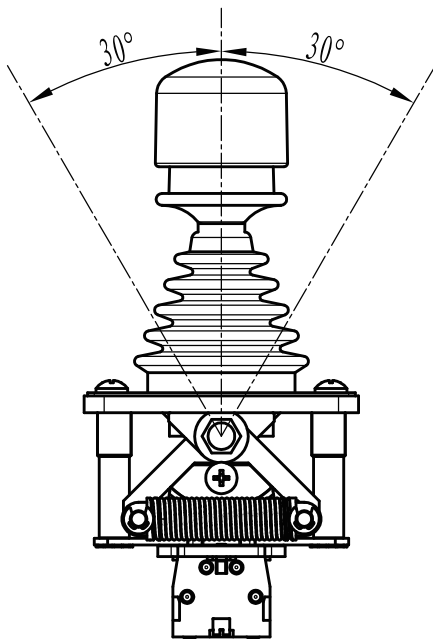
The AT40 joystick features a compact design, light and straightforward structure, enhancing ease of operation. Equipped with a zero position spring return and a self-locking mechanism, it ensures safety and reliability. It boasts a long service life and offers easy wiring, convenient installation, and low maintenance. This product line is primarily used in cranes, construction machinery, and various automated control systems

### Technical Data

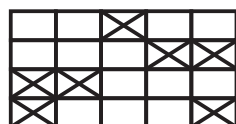
Operating Temperature:	-20°C to 60°C
Handle Operating Force:	≤20N
Mechanical Life:	1M
Power:	AC 2.6A / DC 0.3A
Rated Current:	15A
Rated Voltage:	380V (440V)



### Dimensions



A10



A20